

ateljé Lyktan



STOCKHOLM PARK

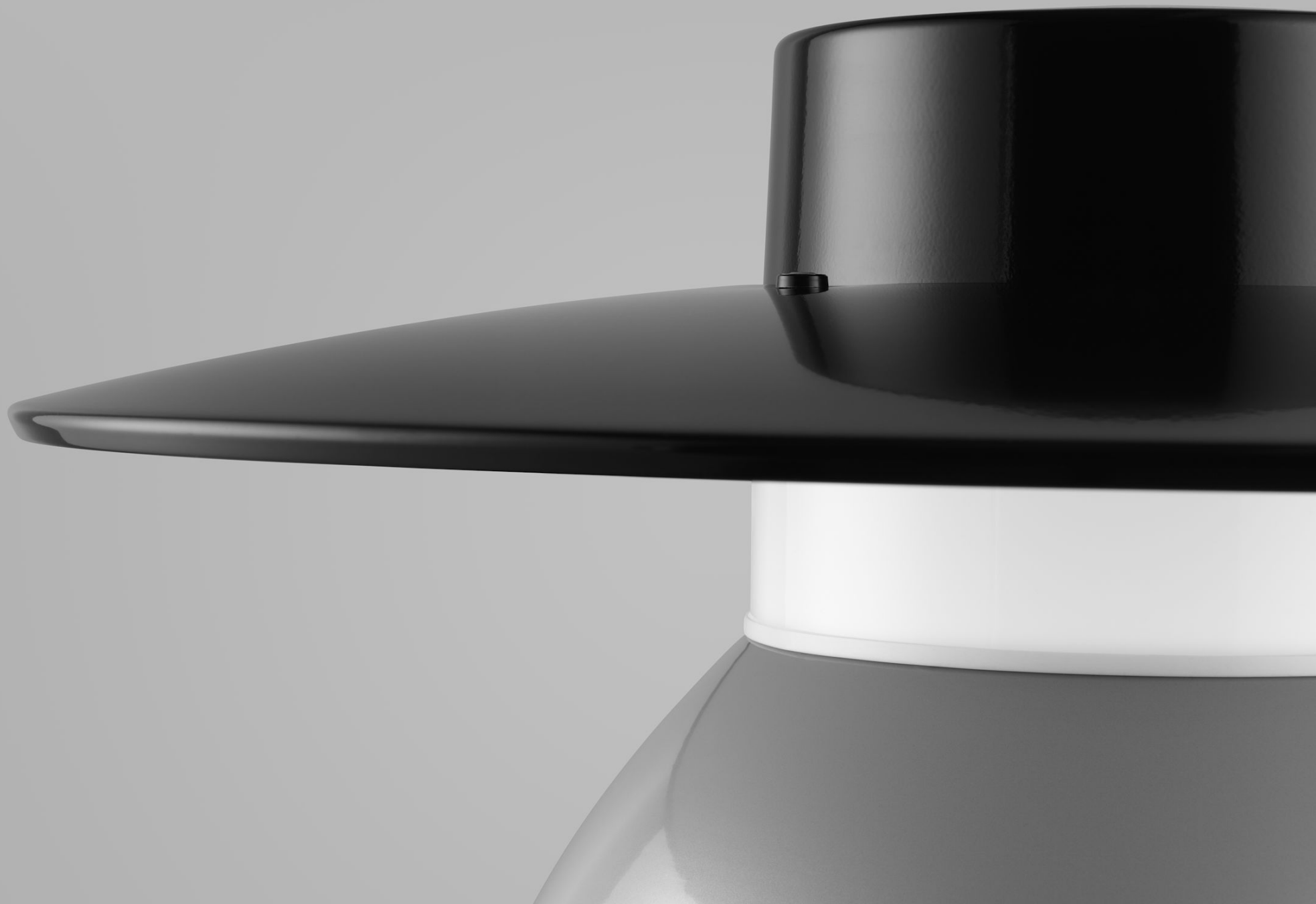
Design by Olle Anderson

Scandinavian lighting tradition

In 1990 the designer Olle Anderson won the nordic design competition 'New light over Stockholm'. The challenge for the contestants was to design a streetlamp which, besides fine lighting performance, could fit equally well into historic and modern parts of the Swedish capital.

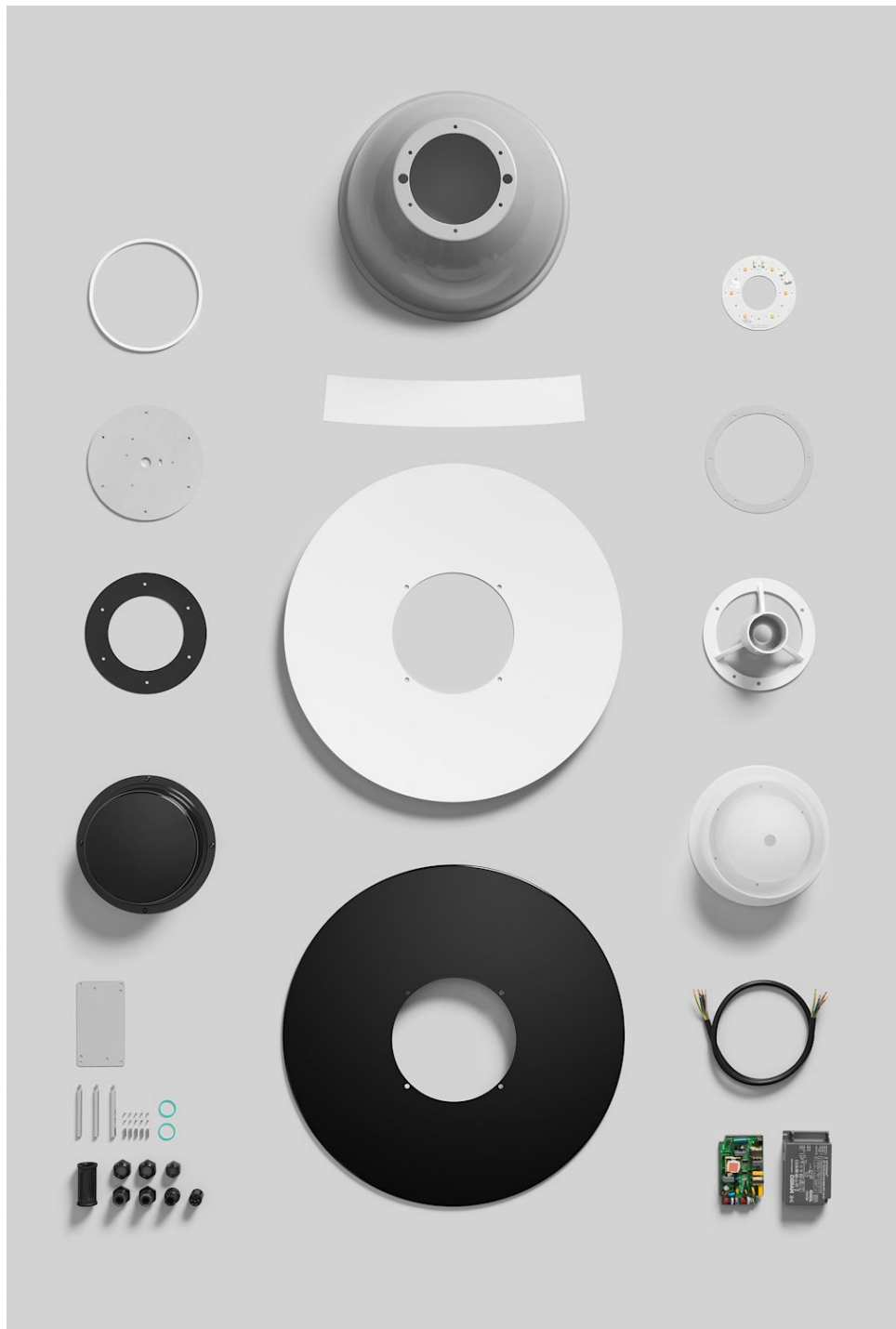
Anderson's streetlamp Stockholm won and was put into production by ateljé Lyktan in three variants: post, suspended and wall. "I've always tried to work within a Scandinavian lighting tradition," says Olle Anderson. "A tradition which utilises and conveys the light in a functional and pleasant way."







Black / Grey
RAL9005 G72 / RAL9006



Technical specifications

Material	Luminaire top and pole connection in die cast aluminium. Shade in spun aluminium. Lamp globe in opal acrylic.
Installation	On post with diameter 60 mm post top.
Corrosivity category	Our outdoor products are in their standard performance painted for environments corresponding to corrosivity category C3. Can be used in environments like urban and industrial atmospheres with a moderate sulphur dioxide pollution or areas with some influence from the coast. For environments with a high sulphur dioxide pollution, we can offer a special treatment for higher corrosive resistance. This will be quoted on request.
Connection	Luminaire is supplied with 0.5 m 5x1.5 mm ² rubber cable and a 5-pin screw connector IP65.
Diffuser	Opal acrylic.
Light scattering	Symmetrical circular light pattern.
Light source	Equipped with LED module fitted with Cree diods, colour temperature 3000K or 4000K. Colour rendering CRI min. 80. Chromaticity tolerance max. 3 SDCM. Rated lifetime: L100 50 000h.
Driver	FULL Programmable Outdoor LED driver from Osram. Programmable driver that allows functions such as DALI and night dimming. Service Life: 100 000h (max 10% drop-out).
Projected wind area	0.1 m ² .
Weight	8 kg.
IK class	10.
Other	Stanchion/post not included.
EPD	En EPD ger dig en klar överblick av armaturens totala miljöavtryck. Du hittar dokumentet under nedladdningar, eller besök den officiella hemsidan för EPD - Läs vår EPD
Energy classification	This product contains a light source of following efficiency class: Light source with CRI and CT 830/840 - Class E

ateljé Lyktan

Head Office

Fyrvaktaregatan 7, SE-296 81 Åhus, Sweden

Tel: +46 (0)44 28 98 10

E-mail: info@ateljelyktan.se

www.ateljelyktan.se